

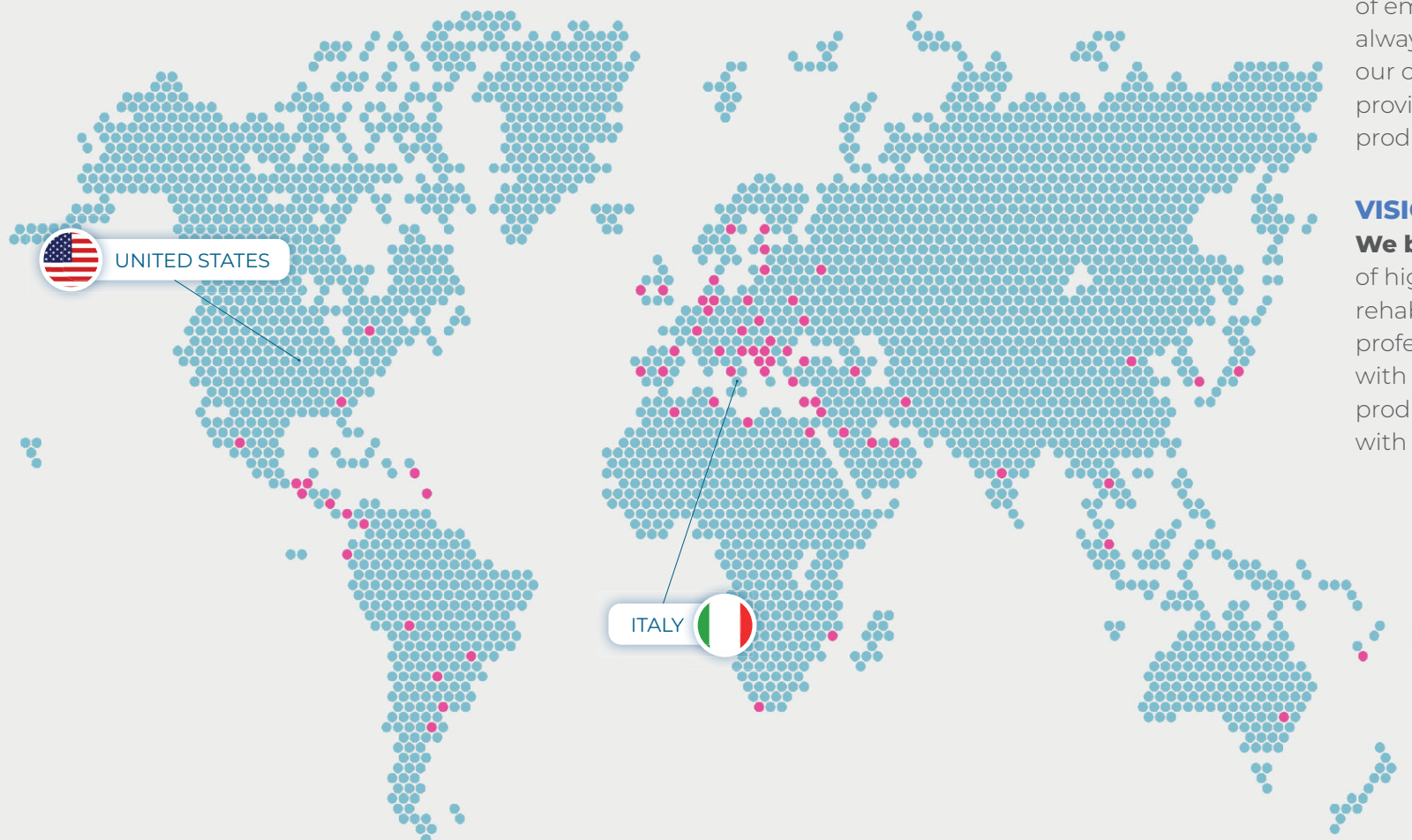
PERFORMANCE REHAB RECOVERY

DiaCaRe
TecarTherapy



Presence in **87** countries

87 COUNTRIES: USA, Italy, Spain, France, Japan, Russia, China, Albania, Algeria, Andorra, Argentina, Armenia, Australia, Austria, Belarus, Belgium, Bolivia, Brazil, British Virgin Islands, Bulgaria, Canada, Czech Republic, Cyprus, Colombia, Cook Islands, Croatia, Denmark, Ecuador, Egypt, El Salvador, Estonia, Finland, Germany, Greece, Guatemala, Honduras, Hungary, India, Iran, Ireland, Israel, Latvia, Lebanon, Libya, Malaysia, Martinique, Mexico, Mozambique, New Caledonia, Nicaragua, Panama, Paraguay, Poland, Portugal, Qatar, Romania, Saudi Arabia, Serbia, Slovakia, Slovenia, South Africa, South Korea, Sweden, Switzerland, Thailand, Netherlands, Tunisia, Turkey, Ukraine, United Emirates, United Kingdom, Uruguay



MISSION

Our mission is providing innovative and cutting-edge products, services, and resources to support athletes, professionals and patients in their journey towards greater success. We take pride in creating an environment of empowerment and growth, always committed to helping our clients reach their goals by providing the highest quality of products and technologies.

VISION

We believe that the future of high performance and rehabilitation will be to empower professionals and people with innovative technological products and solutions, along with access to accurate data.

87
COUNTRIES
MORE THAN
1000
SPORTS TEAMS
/ FEDERATIONS



Therapeutic Effects

BIOSTIMULATION

Deep biostimulation of the tissues in a non-invasive way.

ANTI-INFLAMMATION

Activation of anti-inflammatory response

ABSORPTION

Absorption of hematomas and edemas

RELIEF

Relief of muscle tension and contractures

FLEXIBILITY

Reduces joint stiffness

HEALING

Acceleration of healing and tissue regeneration

It improves microcirculation, thereby promoting healing, maintaining balance, and improving performance. Even after the first treatment, patients will notice a reduction in pain and discomfort and an improvement in their ability to recover and regain function quickly

OPERATING PRINCIPLE The mobilization of electrolytes and their accumulation in the desired body district occurs in three distinct stages:

- Level 1** On the first level, there is biostimulation with an increase in endocellular energy transformation, increased oxygen requirement due to the action on tissue biochemistry, and an analgesic (painkilling) effect, thanks to impact on free nerve endings.
- Level 2** On the second level, we have intracellular oxygenation, chemical micro-hyperemia in the capillary and precapillary districts, associated with degranulation of the specific receptors, an increase in speed of blood flow due to the 'shunt effect,' and finally endothermia due to the acceleration of metabolism in the substratum.
- Level 3** On the third level, we have mechanical vasodilation associated with an increment of deep temperature, increased blood flow and lymphatic drainage.

DIACARE 8000 PRO

DiaCaRe 8000 PRO is the most comprehensive, powerful, and versatile TECAR / CRET Capacitive and Resistive Electrical Therapy machine. The device delivers the widest range of frequencies on the market for the treatment of pain and both chronic and acute disorders of the osteoarticular and muscular systems.



FASCIA TOOLS Unique equipment for myofascial treatments



MULTI-FREQUENCY Create your own protocol using from 400kHz to 1200 kHz, including the 2 medical frequencies 448kHz and 470kHz



HANDS-FREE MODE With the fixed electrodes, the operator can treat the patient integrating the therapy with manual techniques or exercises.



REAL TIME CONTROLS IN A COLOR DISPLAY Instant current absorption by the patient, tissue impedance with visual and sound indications to guide the operator with precise control



HUMAN ATLAS An easy user-friendly illustrative guide



SPECIAL PROGRAMS
Multifrequency, Transdermal Delivery, Athermal Treatments, Pulsed Treatments.

DIACARE 5500 PRO

DiaCaRe 5000 includes all the Globus CRET / TECAR Therapy quality in a device with a **compact size** and **reduced weight**, to guarantee the maximum portability, maintaining the same effectiveness and professionalism.

SPECIAL FEATURES

- Resistive
- Capacitive
- Bipolar
- Preset programs
- Hands free
- Multifrequency
- Pulsed treatments
- Transdermal delivery
- Athermy treatments
- Touch screen navigation
- Color display
- Automatic frequency scanning



REAL-TIME INFO

Username and program, time and treatment phases, emission mode, instant emission power, current absorption graph, frequency emission, contact warning

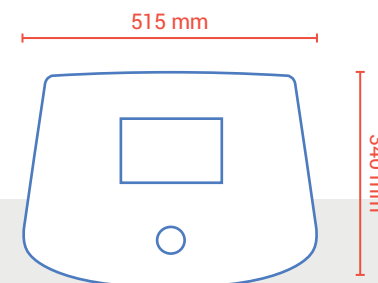


FULL RANGE OF TREATMENTS

Medical programs, pulsed emission programs, auto, scan, athermy, transdermal delivery



The **HANDS-FREE** mode requires the use of two or more fixed electrodes positioned on the treated zone. In this way, the therapist can treat the patient also manually to increase the treatment effectiveness.



DIACARE 8000 PRO - TECHNICAL FEATURES

Display Size: 7" Color Touch Screen Display

Power: 350W $\pm 10\%$ **Outputs:** 2

Emission Frequency: 400kHz, 470kHz, 700kHz, 1000kHz, 1200kHz, $\pm 10\%$

Treatment Modality: Capacitive and Resistive

Capacitive Electrodes: 3 sizes (30mm, 50mm, 70mm)

Convex Capacitive Electrodes: 3 sizes (30mm, 50mm, 70mm)

Resistive Electrodes: 3 sizes (30mm, 50mm, 70mm)

Convex Resistive Electrodes: 3 sizes (30mm, 50mm, 70mm) *

Bi-polar Electrode: 1

Active Return Electrode: 1

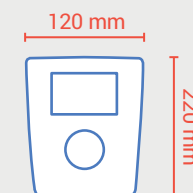
Hands Free Kit: 1

Counter electrode (plate): 1 Size X and 2 Size S

Mains Supply: 100-240V AC, 50-60Hz, 1.8A

Unit Size: 20.27in x 13.38in x 6.70in

Weight: 22.04 lbs



DIACARE 5500 PRO - TECHNICAL FEATURES

Display Size: 4.3" Color Display

Power: 200W $\pm 10\%$

Outputs: 2

Emission Frequency: 400kHz, 470kHz, 700kHz, 1000kHz $\pm 10\%$

Treatment Modality: Capacitive and Resistive

Capacitive Electrodes: 3 sizes (30mm, 50mm, 70mm)

Resistive Electrodes: 3 sizes (30mm, 50mm, 70mm)

Mains Supply: 100-240V AC, 50-60Hz, 1.8A

Unit Size: 4.72in x 8.66in x 2.36in

Weight: 2.42 lbs

(*) Accessory sold separately

Fascia Tools

The **fascia is an extraordinary net of connective tissue** that wraps the whole human body without interruption. It separates and at the same time connects muscles, bones, tendons, nerves, vessels, and organs with one another. It is the only anatomic element that brings together and correlates all the organs and apparatuses of our body. It is rich in receptors that give it a fundamental role in the management of posture and movement. It is involved in most musculoskeletal diseases and for this reason, it is important to know its physiology, its anatomy, and the most up-to-date modern treatment techniques.



4 DIFFERENT SHAPES FOR A FULL RANGE OF TREATMENTS



DiaBlade Large

Tool for Lower Limb and Trunk treatment.



DiaBlade Small

Tool for Upper Limb and Cervical Rachis treatment.



DiaTrigger Point

Tool for the treatment of Trigger Points.



DiaSpine

Tool for Back treatment and Vertebral Mobilization

THE CRET / TECAR DIACARE technology enables an optimal preparation of tissues in capacitive, resistive, or hands-free mode, increasing oxygenation, and vascularization and reducing viscosity by increasing local temperature. Thanks to 4 specific FASCIA TOOLS connected to the device, it is possible to manipulate and remodel the tissues while benefiting from the therapeutic effects of the current generated by TECAR DiaCaRe.

IDEAL TO TREAT

- Tendinitis
- Lumbago
- Cervical pain
- Trigger finger
- Plantar fasciitis
- Ligament injuries
- Epicondylitis, Epitrochleitis
- De Quervain syndrome
- Post-surgery scars
- Post-traumatic scars
- Musculoskeletal imbalance
- Carpal tunnel syndrome
- Iliotibial band syndrome

A Reality Always **Growing**

The TECAR therapy is currently the number one therapy in the world for musculoskeletal and sports injuries performance and recovery. This method, as the most sophisticated way to date, represents a significant advancement in the fields of physical rehabilitation and athletic trainer performance.



The method
delivers immediate
therapeutic results
from the very first
treatment session
and significantly
Speeds Up the
Healing Process

- UNIVERSITIES AND COLLEGES**
Performance • Recovery • Rehab • Research
- MEDICAL FACILITIES**
Recovery • Rehab

- PERFORMANCE CENTERS**
Performance • Recovery
- PROFESSIONAL TEAMS**
Performance • Recovery • Rehab

Areas of **Expertise**



Skill - Myoneural unlocking • **Strength** - Biomechanical improvement and increase mobility • **Endurance** - Increase blood flow

Ideal for improving performance by enhancing muscle function, strength, endurance, flexibility and range of motion, reducing injury risk and muscle fatigue. Optimize skill and technique through myoneural unlocking.

Refuel - Improved returning to play • **Rebuild** - Accelerated tissue regeneration • **Rehydrate** - Faster nutrients delivery • **Injuries Prevention** - Maintain proper function

Ideal for increasing blood circulation, removing waste products from soft tissue that have been broken down, increasing the flow of nutrients that help repair and rebuild muscles, tendons, and ligaments, replenishing energy (glycogen) stores.

Acute Treatment and Chronic Treatment - Reduction of inflammatory processes • **Repair** - Myofascial release • **Remodeling** - Reduction of fibrosis formation

Ideal for Pain relief and Anti-Inflammatory, stop the cycle of painful inflammation/Stiffness, improve mobility, fibrinolytic activity, decrease edema, drain hematologic effusion, and enhance healing.

Treatments

The treatments aim to reduce pain, improve athletic performance and aid in recovery. Effective for sports injuries, prevention, and post-surgical rehabilitation.

PRE-POST COMPETITION

Ideal for enhancing athletic performance and supporting recovery during pre-competition preparation and post-competition recovery. Improves blood flow, oxygenation, muscle function, strength, and flexibility pre-competition, and reduces muscle fatigue, pain, and injury risk post-competition.

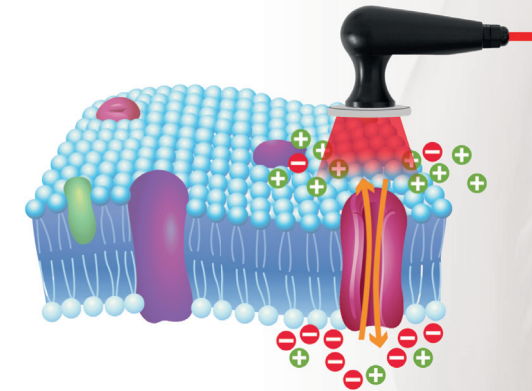
POST-SURGICAL REHABILITATION

Ideal for post-surgical rehabilitation, helping patients recover faster and regain function after surgery. Supports the healing process by reducing pain, swelling, and stiffness, improving mobility, and restoring muscle strength. Helps to prevent complications, reduce scar tissue formation, and improve overall recovery outcomes.



Physiological effects

THERMIC EFFECT	BIOLOGICAL EFFECTS	
Athermia <small>THERMAL RESPONSE</small> 86 - 94°F	Bio stimulation	<ul style="list-style-type: none"> Increases cell proliferation Increases ATP production Restoration of membrane potential
	Analgesia	<ul style="list-style-type: none"> Increases pain threshold Inhibition of nerve endings
Thermal <small>THERMAL RESPONSE</small> 95 - 100°F	Oxygenation	<ul style="list-style-type: none"> Increases oxygen demand. Increases oxygen consumption Increases oxyhemoglobin saturation Fibroblasts Stimulation- elastin and collagen
	Micro Capillary and Pre Capillary Hyperemia	
Hyperthermia <small>THERMAL RESPONSE</small> 101 - 107°F	Increased Membrane Permeability	<ul style="list-style-type: none"> Increases the osmosis process Redistribution of intracellular fluids Acceleration of lymphatic drainage
	Endothermy	<ul style="list-style-type: none"> Decreases the Viscosity of Biological Fluids Increases cellular metabolism Muscle relaxation Reduction of tissue fibrosis Increases the elasticity of connective tissue Reduction of adipogenesis



THE HEAT THAT REGENERATES

TECAR is an innovative therapy which uses endogenous heat production to treat musculoskeletal traumas and pathologies. Heat, generated by the movement of electric charges, stimulates reparative processes and has an anti-inflammatory and analgic effect

BIOLOGICAL EFFECTS

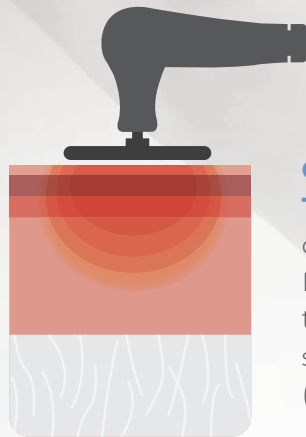
- BIOSTIMULATING
- ANTALGIC
- ANTI-INFLAMMATORY
- DECONTRACTING
- VASODILATOR

CET e RET

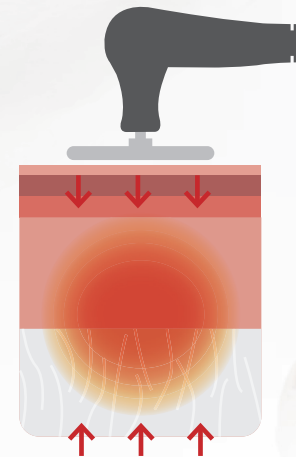


BENEFITS OF HIGH-IMPEDANCE ELECTRODES FOR SOFT TISSUE TREATMENT

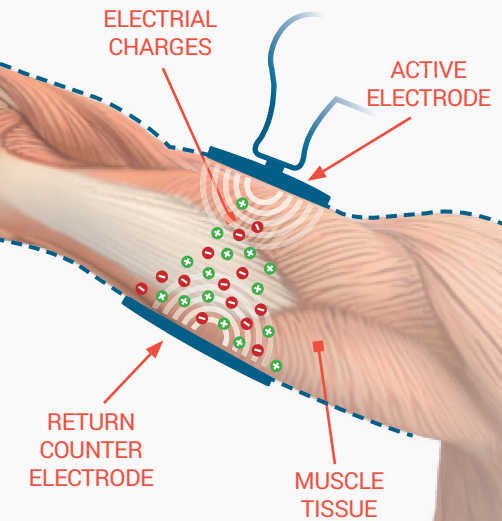
High-impedance (capacitive) electrodes are specially designed for treating soft tissues like muscle, adipose, vascular, and lymphatic. By inducing an endogenous response based on the intensity of the electromagnetic signal applied, they reactivate blood flow, revitalizing the low-impedance soft tissue with high water content through intense vascularization. This results in reduced edema, pain, and inflammation, and improved blood flow.



CET IS CAPACITIVE ELECTRIC TRANSFER • The energy will be concentrated closer to ACTIVE ELECTRODE, thus being used close to the target location • Working soft tissues and water rich tissues (blood, muscles, lymph, skin).



RET IS RESISTIVE ELECTRIC TRANSFER • The energy to be concentrated between the ACTIVE ELECTRODE and the RETURN COUNTER ELECTRODE, where there is more tissue resistance, being used thus having the target location between the two poles • Work on tissues lacking in water (bones, cartilages, tendons)



BENEFITS OF LOW-IMPEDANCE ELECTRODES

Treatment using low impedance electrodes is now thought to be the most successful treatment for fibrous connective tissue and bone tissue, which are biophysically more resistant tissues. These tissues are particularly well-suited to selective, in-depth action (bones, cartilage, large tendons, aponeuroses).

Application **Forms** The forms in which high-impedance electrodes can be applied



- 1 **HANDS-FREE** This form is applied without the need for manual intervention, allowing for hands-free use.
- 2 **FASCIA TOOL** This form is designed to be used as a tool for fascia treatment.
- 3 **RESISTIVE** - This form uses resistive electrodes that work by generating resistance to an electrical current.
- 4 **CAPACITIVE** - This form uses capacitive electrodes that work by storing electrical energy.
- 5 **ACTIVE RETURN ELECTRODE** - This form uses two active electrodes, allowing greater mobility in energy transmission.

Multi Frequencies

BRING ENERGY IN THE TISSUE YOU WANT

Diacare can work with different frequencies in order to hit the therapeutic target

Pulsed

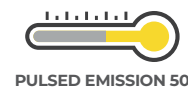
Use Diacare Treatments on pathologies in acute phase as well. All the energy you need without overheating tissues.

Diacare has two types of energy emission, continuous and pulsed. With pulsed emission programs, with a different duty cycle, it is possible to keep the energy transferred to the tissues high without increasing temperature. This method is very useful to treat traumas in an early and/or acute phase.

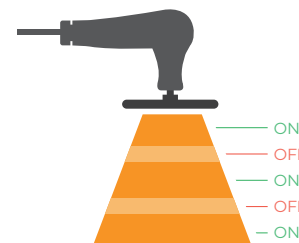
Bones and Joint

Epidermis, Dermis, Hypodermis

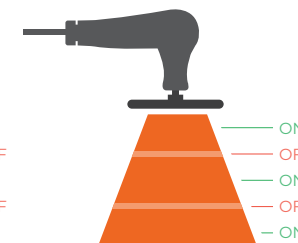
Muscle and Soft Tissue



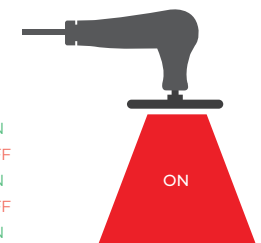
PULSED EMISSION 50



PULSED EMISSION 70



PULSED EMISSION 90



CONTINUOUS EMISSION

ACCESSORIES

We offers a variety of accessories to complement its therapy devices that are designed to improve the effectiveness and versatility of Globus therapy devices.



CONDUCTIVE CREAM



BIPOLAR HANDLE



NEUTRAL ACTIVE HANDLE

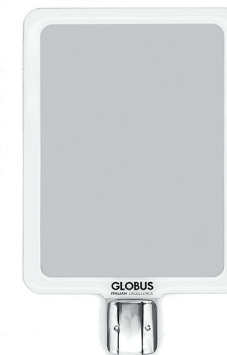


CONVEX ELECTRODES

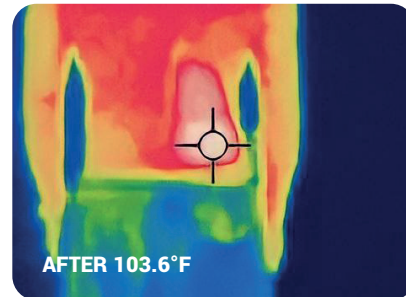
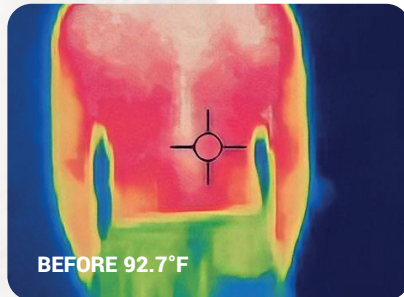
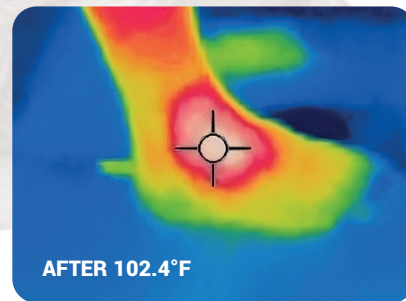
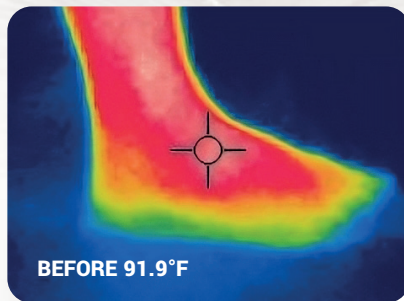


RESISTIVE HANDGRIP

DIFFERENT RETURN PLATE SIZES



The most **Precise and Powerful** Tecar in the world



Our Tecar system represents the pinnacle of therapeutic technology, combining precision and power. Featuring 170 protocols covering the entire Human Atlas, including 168 tailored for various sports, it enables you to enhance performance and accelerate recovery. Welcome to the future of Tecar therapy, where precision, power, and customization revolutionize health, performance, and recovery.

170 Suggested Protocols in Human Atlas

168 Sports Protocols

- Football
- Basketball
- Baseball
- Soccer
- Golf
- Tennis
- Ice Hockey
- Track & Field
- Swimming

24 Suggested Protocols by Anatomical Body Parts

6 Multi Frequency Programs for Recovery and Ready to Play

Special Programs

- Hands Free
- Fascia Tools
- Pulsed

Create and Store your Own Protocols

Informative material for field professionals.

The images, technical features and data in this leaflet are not binding and may be changed by the manufacturer without any previous notice. For more information about our products and treatments, to watch our products videos and to know our dealers visit our website.

DiaCaRe
TecarTherapy

 15807 Biscayne Blvd. Suite 109 – North Miami – FL – 33160

 (855) 456-2875

 tecarglobususa.com

